

Small decal Installation (Wet Method)

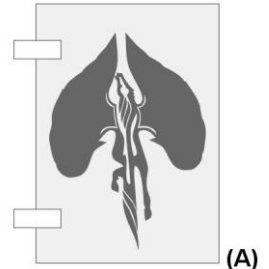
Caution: The adhesive used on these decals is very strong and meant for permanent installation. Once the decal has been applied, it cannot be removed without destroying the decal.

Minimum Application Temperature: 46 Degrees F

Please follow the installation instructions carefully.

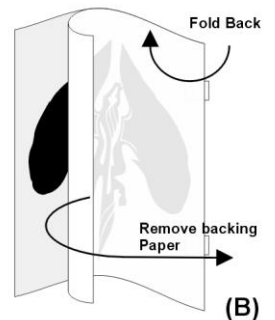
Tools/Supplies needed:

1. Masking tape
2. A stiff squeegee or straightedge.
3. Soap and Water solution.
4. Spray Bottle



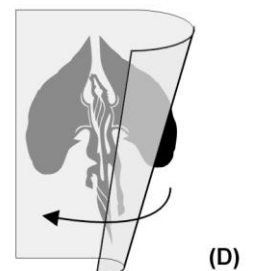
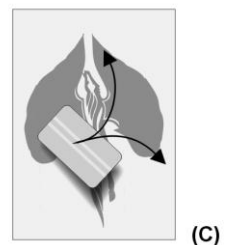
Preparation:

1. Mix a solution of liquid dish soap and water. Use approximately 4 drops of liquid detergent per 16 Oz of water (spray bottle is recommended).
2. Clean the surface thoroughly using Glass Cleaner to remove all traces of wax, grease, or dirt. (Tip: We recommend wiping down area with alcohol after cleaning)



Installation

1. Place the decal in the desired position and hold it in place using masking tape, as shown (Figure A). Tape can go on side or top.
Note: Do not remove the backing paper or transfer paper at this point.
2. When you are satisfied with the placement, fold the decal back using the masking tape as a hinge (Figure B).
3. Carefully remove the backing paper (Figure B), taking care not to let the decal fold over on itself or touch any other surfaces (a few fingerprints will not affect the adhesion).
4. Thoroughly wet the surface where the decal is to be applied.
Note: Make sure the surface is completely wet. If the decal touches a dry surface it will permanently adhere and cannot be adjusted.
5. Carefully lay the decal back down on to the wet surface (Figure C). Using the squeegee, very gently press the decal into place, working from the center outward.
Note: Do not use too much pressure at this point. Use the squeegee only to press out any wrinkles or bubbles.
6. Once the decal has been completely applied, and no wrinkles or bubbles are apparent, use more force on the squeegee to press out any remaining liquid.
Note: Pull the squeegee across the surface. Pushing the squeegee could easily tear the wet paper and the vinyl.



7. Allow the decal to dry thoroughly (dabbing the paper with a dry towel, helps to speed up the process). Depending on the weather and temperature, drying time will vary (**you should allow at least 30 minutes**).
8. When the decal is completely dry, carefully begin pulling the transfer paper off (Figure D), starting at one corner and working across to the opposite corner.
9. Work slowly during this process, small letters and details may lift up with the transfer paper. If this happens, simply lay the paper back into place, press it down with the squeegee, and allow a little more drying time.
10. Once the transfer paper has been removed, the decal and surrounding area should be gently cleaned using a soft cloth and glass cleaner (Do not scrub the decal).

Note: Small bubbles can be removed by sticking the bubble with a needle, and gently pressing it down.